

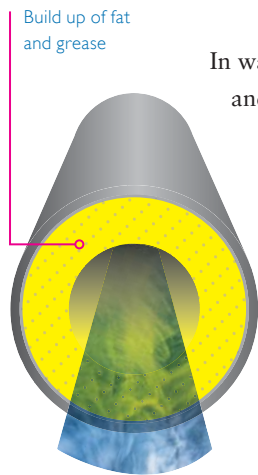
TOTAL FOG MANAGEMENT

Grease Management Services

OVERVIEW

Fat, Oil and Grease build-up is the primary cause of drain problems at sites with commercial kitchens.

Fat, oil and grease (FOG) enters the drainage systems of commercial premises from washing of pots, pans, plates and utensils.



In warm water the fat, oil and grease is in suspension and can be easily washed down the drain-line.

However once the wastewater cools FOG comes out of suspension and forms a sticky coating on the walls of the pipe-work.

Left untreated this fatty-coating will build-up and reduce the capacity of the pipe.

Initially this will slow the flow of the drain-line but in time may lead to a drain blockage – often at the worst possible time!

The problem is not just blockages. FOG is a major issue for sewer network operators who are now taking action against those who discharge FOG into the sewer system.

The effects on the sewer network of FOG:



WATLING HOPE CAN HELP

Watling Hope work with some of the UK's leading pubs, restaurants, hotels and commercial caterers to manage the problem of grease, keeping drainage systems operational and buildings compliant.

Our focus is not on supplying products - but solving the problem.

For our customers we conduct a site survey at no charge, assess site requirements and put forward solutions to control grease build-up and prevent drain blockages.

For new-builds we work with consultants and specifiers to design practical grease management arrangements to reduce the risk of drain blockages, improve hygiene and minimise the environmental impact of the kitchen on the connecting drainage and environment.

FINDING THE RIGHT SOLUTION FOR YOUR BUSINESS

Choosing the right system for your business depends on a variety of factors, from space constraints to practical considerations such as staff training. At Watling Hope we are here to help you make the right choice for your business - from initial cost through to ongoing maintenance.

The options available are outlined overleaf...

TOTAL FOG MANAGEMENT

Grease Management Services

GRAVITY GREASE SEPARATION



FOG is separated by passing effluent through a chamber containing an integral baffle wall. The baffle-wall causes the oil floating on the surface to be trapped in the chamber, allowing grease free water to pass on into the drainage system.

AUTOMATIC GREASE SEPARATION



Using the same principles to trap FOG as a conventional separator automatic systems then skim the collected oil and discharge it into an external container for disposal / recycling. By constantly removing the FOG automatic grease separation systems are able to achieve very high standards of removal from a relatively small size separator.

BIOLOGICAL GREASE DRAIN TREATMENT



Watling Hope's stand-alone biological drain treatment systems inject specially selected naturally occurring bacteria into the drain line. The bacteria digest grease deposits and form a living culture in the drainage system which continues to digest fat as it cools on the pipe-walls 24 hours a day.

To discuss your requirements and arrange a free survey please call our FOG Team on 01789 741825 or email fog@watlinghope.co.uk

OUR SERVICES

- CCTV Drainage Investigation
- Identification of contamination points
- Identifying the best solution
- Installation
- Maintenance
- Effluent Monitoring
- FOG Education Programme

FOG FACTS

The Environment Agency estimate 75% of sewer blockages are caused by a build-up of FOG.

ENVIRONMENT AGENCY

Anglian Water estimate that 10,000 tonnes of fat, oil and grease enter their drainage system each year alone – reducing the sewer capacity by up to 10%.

ANGLIAN WATER

The Environment Agency estimate that Sewer Blockages account for over 100,000 environmental incidents each year.

ENVIRONMENT AGENCY

OUR CLIENTS

Airports / Caravan & Holiday Parks / Developers / Construction / Fast Food / Garden Centres / Golf & Leisure / Hospital & Care Sector / Hotels / International / Export / MOD / Non-Profit Organisations / Office Kitchens / Pub & Bar / Restaurants.